



General Purpose WPP1223(12V2.3Ah)

WPP

OWER

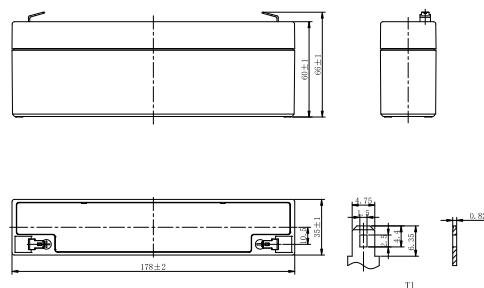
HIDDEN IN QUALITY

Specifications

Rated Voltage	12V	
Nominal Capacity	2.3Ah	(C ₂₀ , 1.75V/cell)
Dimension	Length	178±2mm (7.00 inches)
	Width	35±1mm (1.38 inches)
	Container Height	60±1mm (2.36 inches)
	Total Height	66±1mm (2.60 inches)
Approx Weight	0.93 Kg (2.05 lbs)	
Terminal	T1	
Container Material	ABS	
Rated Capacity (25°C)	2.30 Ah	(20hr, 0.115A, 1.75V/cell)
	2.16 Ah	(10hr, 0.216A, 1.75V/cell)
	1.98 Ah	(5hr, 0.396A, 1.75V/cell)
	1.76 Ah	(3hr, 0.587A, 1.75V/cell)
	1.45 Ah	(1hr, 1.45A, 1.60V/cell)
Max. Discharge Current	34.5A (5s)	
Internal Resistance (25°C)	Approx 75mΩ	
Operating Temp. Range	Discharge	-15 ~ 50°C (5 ~ 122°F)
	Charge	-20 ~ 40°C (-4 ~ 104°F)
	Storage	-15 ~ 40°C (5 ~ 104°F)
Nominal Operating Temp. Range	25±3°C (77±5°F)	
Cycle Use	Initial Charging Current less than 0.69A. Voltage	
	14.1V~14.7V at 25°C(77°F)Temp. Coefficient -30mV/°C	
Standby Use	Initial Charging Current less than 0.69A. Voltage	
	13.5V~13.8V at 25°C(77°F)Temp. Coefficient -20mV/°C	
Effect of temp. to Capacity	40°C (104°F)	103%
	25°C (77°F)	100%
	0°C (32°F)	86%
Self Discharge	Batteries may be stored for up to 6 months	
	at 25°C(77°F) and then a freshening charge is required. For higher temperatures the time interval will be shorter.	



Layout



Constant Current Discharge (Amperes) at 25 °C (77°F)

F.V/Time	5min	10min	15min	20min	30min	45min	1h	1.5h	2h	3h	4h	5h	6h	8h	10h	20h
1.85V/cell	6.10	4.48	3.56	2.90	2.16	1.62	1.32	0.989	0.792	0.569	0.453	0.385	0.329	0.259	0.211	0.113
1.80V/cell	6.61	4.71	3.70	2.99	2.21	1.65	1.35	1.01	0.804	0.578	0.459	0.391	0.334	0.262	0.214	0.114
1.75V/cell	7.14	4.94	3.83	3.08	2.27	1.69	1.37	1.02	0.817	0.587	0.466	0.396	0.338	0.265	0.216	0.115
1.70V/cell	7.68	5.17	3.97	3.17	2.32	1.72	1.40	1.04	0.830	0.595	0.472	0.401	0.342	0.269	0.219	0.116
1.67V/cell	7.99	5.31	4.05	3.23	2.35	1.74	1.41	1.05	0.838	0.600	0.476	0.404	0.345	0.271	0.221	0.117
1.60V/cell	8.71	5.63	4.24	3.35	2.42	1.78	1.45	1.07	0.855	0.612	0.485	0.411	0.351	0.275	0.224	0.118

Constant Power Discharge (Watts/cell) at 25 °C (77°F)

F.V/Time	5min	10min	15min	20min	30min	45min	1h	1.5h	2h	3h	4h	5h	6h	8h	10h	20h
1.85V/cell	11.6	8.58	6.83	5.58	4.17	3.14	2.58	1.93	1.55	1.12	0.892	0.761	0.652	0.514	0.420	0.225
1.80V/cell	12.5	8.96	7.07	5.73	4.26	3.20	2.62	1.96	1.57	1.13	0.903	0.770	0.660	0.519	0.425	0.228
1.75V/cell	13.4	9.35	7.28	5.88	4.34	3.25	2.65	1.98	1.59	1.15	0.914	0.779	0.667	0.525	0.430	0.229
1.70V/cell	14.3	9.73	7.50	6.02	4.42	3.30	2.69	2.01	1.61	1.16	0.925	0.788	0.675	0.531	0.434	0.232
1.67V/cell	14.8	9.96	7.64	6.11	4.47	3.33	2.71	2.03	1.62	1.17	0.931	0.793	0.679	0.535	0.437	0.232
1.60V/cell	16.0	10.5	7.93	6.31	4.58	3.40	2.77	2.06	1.65	1.19	0.947	0.805	0.690	0.543	0.444	0.235



General Purpose WPP1223(12V2.3Ah)

WPP
OWER
HIDDEN IN QUALITY

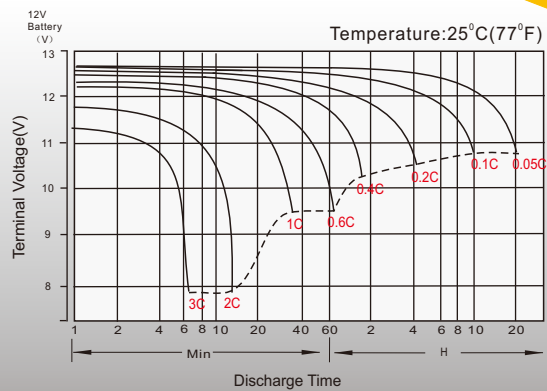
Applications

- All purpose
- Uninterruptable Power Supply (UPS)
- Electric Power System (EPS)
- Emergency backup power supply
- Alarm and security system
- Communication power supply
- DC power supply
- Auto control system

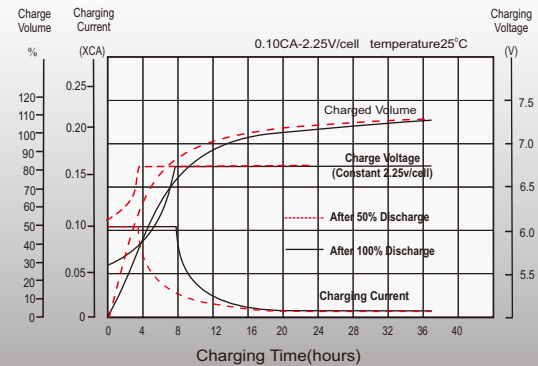
General Features

- 5 years design life(25°C)
- Special exhaust structure and sealing technology, safe and reliable, flexible installation, convenient maintenance
- PbCaSn alloy for plate grids: less gassing, less self-discharging
- High quality AGM separator: extend cycle life and prevent micro short circuit
- High purity raw material: ensure low self discharge rate

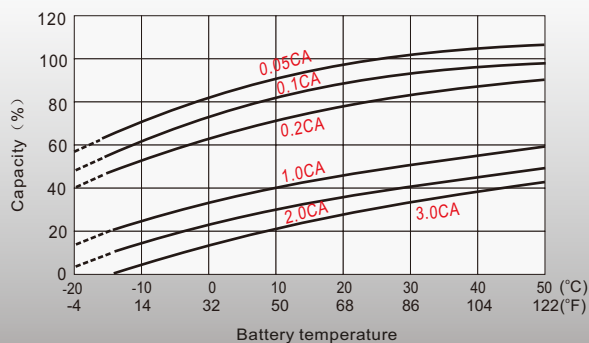
Discharge Characteristics



Float Charging Characteristics



Temperature Effects in Relation to Battery Capacity



Float Service Life

